

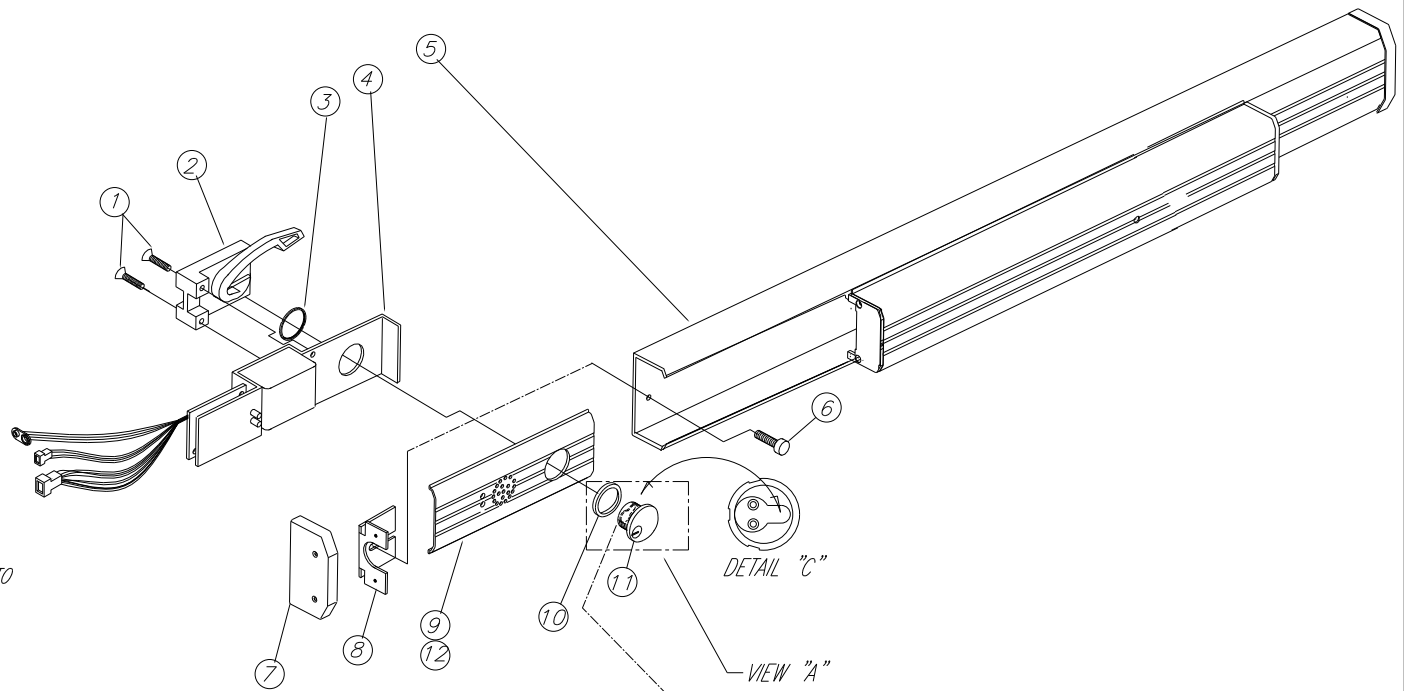
**INSTALLATION INSTRUCTIONS:**

1. REMOVE PANIC ASSEMBLY FROM DOOR STILE.
2. REMOVE INACTIVE BASE COVER.
3. SLIDE-OUT REAR END BASE COVER

**CYLINDER INSTALLMENT**

1. REMOVE (2) SCREWS 10-32 x 1" F.H.M. FROM ALARM SUB-ASS'Y. (CAM BRACKET ASSEMBLY)
2. POSITION CYLINDER RING AS PER VIEW "A", INSERT MORTISE CYLINDER WITH CAM POSITIONED AS PER DETAIL "C"
3. THREAD ON LOCK RING AS SHOWN.
4. RE-ATTACH CAM BRACKET SUB-ASS'Y

NOTES: 1. THE KEY SHOULD TURN EASILY IN BOTH DIRECTIONS.  
 2. CAUTION-EA (EXIT ALARM) MODELS HAVE ELECTRONIC COMPONENTS SUSCEPTIBLE TO DAMAGE.



**OPERATION INSTRUCTIONS:**

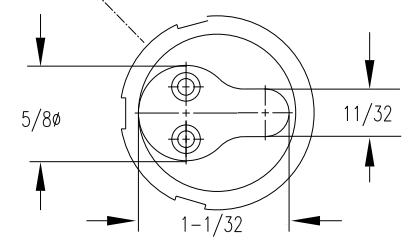
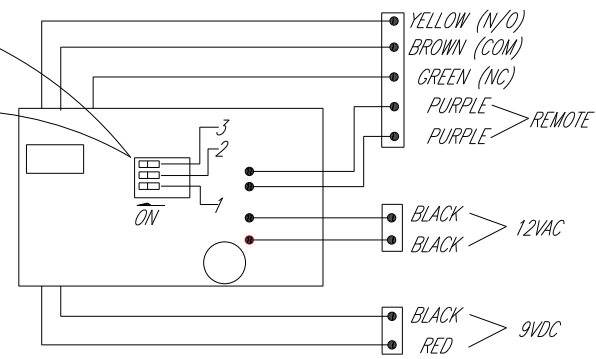
1. **POWER:** THIS UNIT WILL OPERATE ON A 9V BATTERY. HOWEVER, IT MAY BE HARDWIRED TO 12V AC/DC. 9V BATTERY MUST BE USED TO AVOID "LOW BATTERY" CHIRPING.
2. **EXTERNAL SIGNAL SWITCH:** A RELAY IS PROVIDED AND IS ACTIVATED WHEN THE PUSH PAD IS DEPRESSED. IT WILL REMAIN ACTIVATED UNTIL ALARM IS DISARMED OR REARMED. RELAY IS SIZED FOR 1A@24V.
3. **DIP SWITCH 1:** SETS ARM DELAY. IF SWITCH 1 IS OFF, THE DEVICE WILL BE FULLY ACTIVE 15 SECONDS AFTER YOU TURN THE KEY CYLINDER. IF SWITCH 1 IS ON, THE DEVICE WILL BE FULLY ACTIVE AFTER 60 SECONDS.
4. **DIP SWITCHES 2 & 3:** SETS THE AUTO REARMING FEATURE. OPTIONS ARE AS FOLLOWS:
 

SWITCH 2	SWITCH 3	ALARM WILL AUTOMATICALLY REARM AFTER 2 MINUTES.
OFF	OFF	ALARM WILL AUTOMATICALLY REARM AFTER 10 MINUTES.
ON	OFF	ALARM WILL SOUND CONTINUOUSLY UNTIL IT IS RESET.

**ALARM OPERATIONS:**

ATTACH THE BATTERY TO THE CONNECTOR.

1. TURN KEY COUNTERCLOCKWISE AND THEN REMOVE KEY. GREEN LED WILL GLOW FOR THE ARM DELAY PERIOD FOLLOWED BY 3 SHORT CHIRPS. ALARM IS NOW ARMED.
2. DEPRESS PUSH PAD, ALARM SIREN WILL SOUND AND RED LED WILL ILLUMINATE.
3. TURN KEY CLOCKWISE. SIREN WILL STOP AND RED LED WILL TURN OFF. ALARM IS NOW DISARMED AND RED LED WILL DOUBLE-BLINK AT REGULAR INTERVALS.
4. **AUTO-REARM TEST:** REPEAT STEPS 1 & 2. AFTER APPROXIMATELY 2 MINUTES OR TEN MINUTES), A SELECTED, ALARM WILL TURN OFF SIREN AND RED LED. ALARM WILL THEN REARM AS DESCRIBED IN STEP 1.
5. **LOW BATTERY ALERT FEATURE:** SIREN WILL CHIRP AT REGULAR INTERVALS TO SIGNAL THAT THE BATTERY VOLTAGE HAS DROPPED BELOW 7 VOLTS DC.



DETAIL "C"  
CAM PROFILE

DIMENSIONAL TOLERANCES UNLESS OTHERWISE SPECIFIED	APPROVALS	DATE
DECIMAL DIMENSIONS .XX ± .010	APPROVED	
DECIMAL DIMENSIONS .XXX ± .005	CHECKED	
ANGULAR ± ° FRACTIONAL ± 1/32	DRAWN	RM 07.18.03

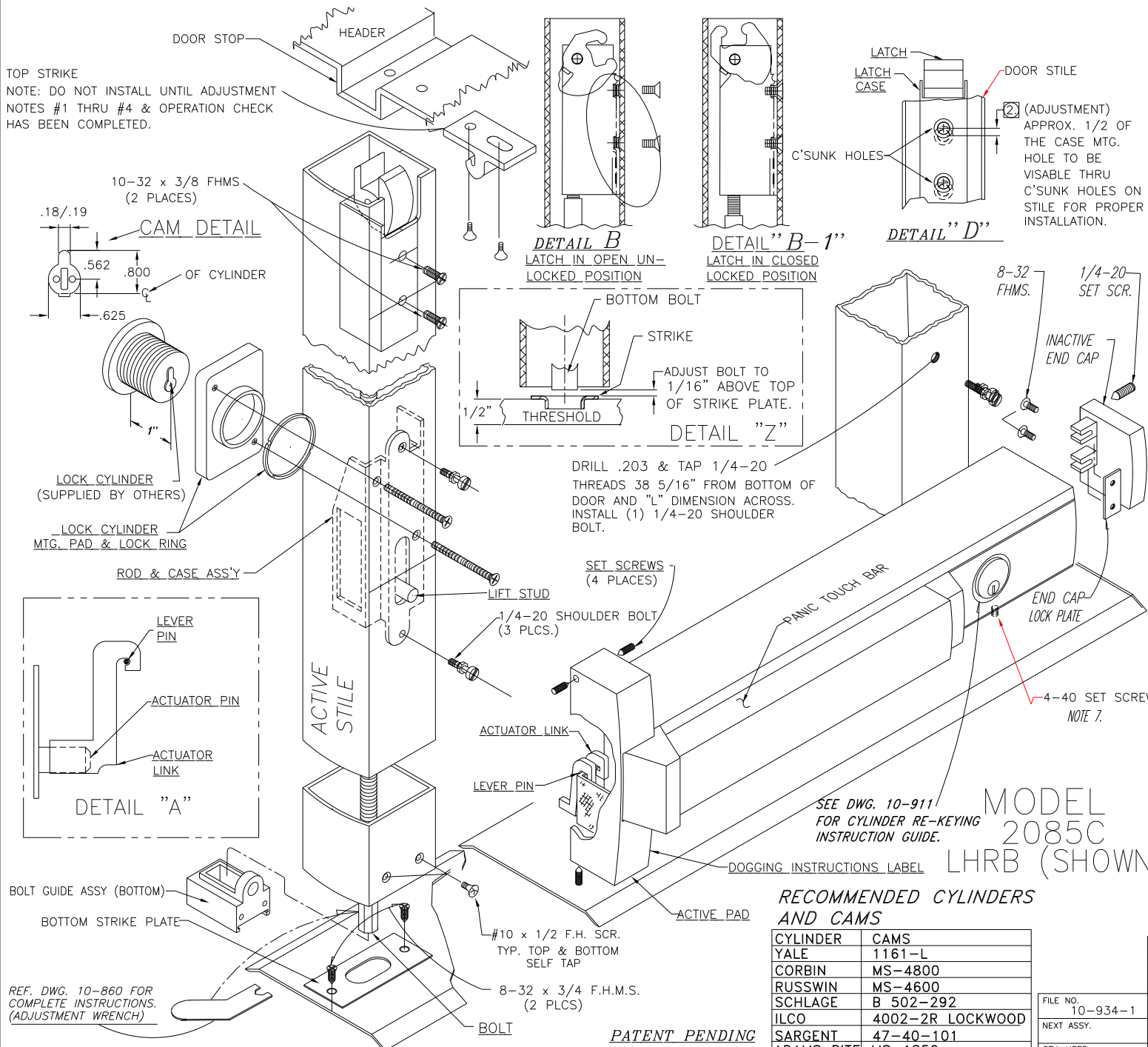
FILE NO.	MATERIAL	SCALE	NONE	INSTALLMENT GUIDE 1200 SER. ALARM UNIT	SHEET 1 OF 2 SHEETS DWG. NO. 10-1031 REV. A
NEXT ASSY.	FINISH				
QTY. USED	HEAT TREAT				





### MOUNTING INSTRUCTIONS:

TOP STRIKE  
NOTE: DO NOT INSTALL UNTIL ADJUSTMENT NOTES #1 THRU #4 & OPERATION CHECK HAS BEEN COMPLETED.



1. PREPARE DOOR, HEADER AND THRESHOLD PER DWG. 10-934 OPPOSITE SIDE OF THIS PG.
2. INSTALL ROD & CASE ASS'Y WITH TOP LATCH CASE INTO ACTIVE STILE. SECURE ROD & CASE ASS'Y WITH 2 EA. 1/4-20 SHOULDER BOLTS. NOTE! DO NOT SECURE TOP LATCH CASE TO STILE AT THIS TIME.
3. INSTALL BOTTOM STRIKE PLATE ON THRESHOLD WITH 2 EA. #8x3/4 SELF TAPPING SCREWS.
4. INSTALL 1 EA. 1/4-20 SHOULDER BOLT ON INACTIVE STILE. (IF LOCK CYL. IS NOT BEING USED SKIP NOTE #5.)
5. INSERT LOCK CYLINDER INTO LOCK MTG. PAD AND SECURE WITH LOCK RING. POSITION LOCK CYLINDER MTG. PAD ON OUTSIDE (LOCK SIDE) OF ACTIVE STILE & SECURE WITH 2 EA. 8-32x1-15/16 FHMS.
6. PLACE ACTUATOR LINK ONTO LEVER PIN PER DETAIL "A" MAKE SURE THERE IS A POSITIVE ENGAGEMENT OF LINK ONTO LEVER PIN.
7. REMOVE INACTIVE END CAP AS SHOWN BY RELEASING 2 EA. 8-32 F.H.M.S. (FOR INSTALLMENT OF LOCK CYLINDER, SEE DWG. 10-911 INSTRUCTION GUIDE.) BACK-OFF 4-40 SET SCREW, SLIDE COVER PLATE AND ASSEMBLE PER 10-911. REINSTALL COVER ASS'Y AND THE INACTIVE END CAP INTO PANIC BASE, FINALIZE PANIC ATTACHMENT WITH 1/4-20 SET SCREW.

**ADJUSTMENTS:**

1. **TOP LATCH:**  
PANIC MUST BE IN THE DOGGED POS. TO COMPLETE THE FOLLOWING ADJUSTMENTS.
2. POSITION TOP LATCH INTO THE OPEN POS. PER DETAIL "B" & ROTATE TOP LATCH CASE UNTIL MTG. HOLES ON LATCH CASE ARE OFF-CENTER TO C'SUNK HOLES ON ACTIVE STILE AS SHOWN PER DETAIL "D". SECURE CASE WITH (2) EA. 10-32x1/4 FHMS.

**BOTTOM BOLT ADJUSTMENT:**

1. WITH PANIC UN-DOGGED FULLY DEPRESS TOUCH BAR, BOTTOM ROD WILL RETRACT & LATCH WILL ROTATE TO THE UNLOCKED POS. PER DETAIL "B". WITH LATCH IN THIS POS. ADJUST BOTTOM BOLT PER DETAIL "Z".
2. INSTALL BOLT GUIDE & SECURE WITH (2) EA. #10 SELF TAPPING SCREWS.

**MANUAL CHECK:**

- UN-DOG PANIC DEVICE, MANUALLY POSITION TOP LATCH TO THE LOCKED OR CAPTURED POS. PER DETAIL "B-1" (BOTTOM BOLT WILL THEN EXTEND).
1. **OPERATIONS CHECK:**  
DEPRESS PANIC TOUCH BAR FULLY, BOTTOM BOLT SHOULD RETRACT TO BTM. EDGE OF DOOR STILE, TOP LATCH WILL WIND UP IN THE OPEN POSITION (DETAIL "B").

- \*\* IMPORTANT: IF TOP LATCH POSITIONS ITSELF TO THE OPEN POS. WITH TOUCH BAR ONLY BEING PARTIALLY DEPRESSED, OR IF TOP LATCH DOES NOT GO TO THE OPEN POS. WHEN TOUCH BAR IS FULLY DEPRESSED, REDOG PANIC & REPEAT STEPS 1 THRU 3 IF TOP LATCH IS RE-ADJUSTED BTM. BOLT MUST BE RE-ADJUSTED PER DETAIL "Z" AS WELL.**
2. WHEN SYTEM WORKS PROPERLY, INSTALL TOP STRIKE WITH OVAL C'SUNK HOLES TOWARDS DOOR STOP.

**RECOMMENDED CYLINDERS AND CAMS**

CYLINDER	CAMS
YALE	1161-L
CORBIN	MS-4800
RUSSWIN	MS-4600
SCHLAGE	B 502-292
ILCO	4002-2R LOCKWOOD
SARGENT	47-40-101
ADAMS RITE	MS-1850

FILE NO.	10-934-1
NEXT ASSY.	
QTY. USED	1

DIMENSIONAL TOLERANCES UNLESS OTHERWISE SPECIFIED		APPROVALS		DATE
DECIMAL DIMENSIONS .XX	± .010	APPROVED		
DECIMAL DIMENSIONS .XXX	± .005	CHECKED		
ANGULAR ±	± 1/64	DRAWN	RM	5/10/97
MATERIAL	NONE	SCALE	NONE	
FINISH	NONE	INSTALLATION GUIDE		
HEAT TREAT		2085C PANIC DEVICE & 1900 TOP LATCH		



SHEET 1 OF 2 SHEETS	
DWG. NO.	REV.
10-934	A

REF. DWG. 10-860 FOR COMPLETE INSTRUCTIONS. (ADJUSTMENT WRENCH)

PATENT PENDING

MODEL 2085C LHRB (SHOWN)

SEE DWG. 10-911 FOR CYLINDER RE-KEYING INSTRUCTION GUIDE.